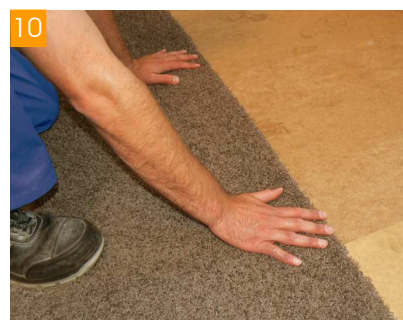




StrongBoard TK Installation Guide



- 1 Cut perimeter insulation above edge support battens. Cover heating elements with a damp proof membrane if there is any potential moisture left in the substrate.
- 2 Acclimatise StrongBoard TK in room for between 2-6 days before installing. Cut tongue off first row of StrongBoard facing the wall.
- 3 Using wedges and similarly to installing a timber floor, keep the StrongBoard 10mm away from the wall.
- 4 Smaller sections can be cut using a universal circular saw blade. Remaining pieces greater than 40cm in length can be used to begin a new row.
- 5 Large rooms – from 8 x 8m – require a movement joint. The movement joint should be supported by edge battens and covered with steel sheet.
- 6 StrongBoard sections should be clipped together using the tongue & groove.
- 7 The system clicks together once the StrongBoard is laid flat.
- 8 Once the t&g edge is engaged and lying flat the short edge can be tapped into final position with hammer and block.
- 9 Apply sealant and leave to dry for 12 hours.
- 10 Final finish can be laid after 24hours.