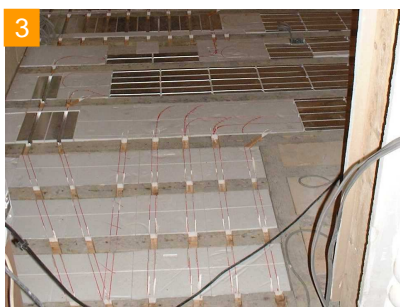


System IDEAL – Between Joist Installation Guide



1 Preparatory work involves fixing battens to sides of joists and fixing strong sheet material above. We recommend 18mm ply especially if working on upper floors. Cut around noggins where required. Ensure that ply is positioned 30mm below the top of the joists.

2 Lay panels according to supplied plan. Layouts are generally indicative as we are unable to draw accurate joist positions.

3 Mark flow and return pipe positions with marker pens. Label circuit numbers if required.

4 Cut channels for pipe work with 20mm router.

5 Once satisfied with preparation install pipe into heating elements. It is possible to have three pipes between floor joists. Bend pipe round noggins. Heating elements may have to be removed when working around noggins.

6 Upon completion, clean up and pressure test in preparation for final floor.

7 Wooden floors (even reclaimed) can be re-laid back down on the joists. It is advisable to install a layer of brown building paper beneath reclaimed wood as possible shrinkage will expose aluminium plates of heating system.

8 New, t&g timber boards can be secret nailed back to the floor joists according to manufacturers specification.

9 The JUPITER Screed Replacement Tile system can be used across floor joists and installed heating system as a bearer to floor finishes such as wood, stone and marble.

10 The Screed Replacement Tile system provides a strong and stable substrate which prevents floor failure. In this case the system was used for Italian marble.