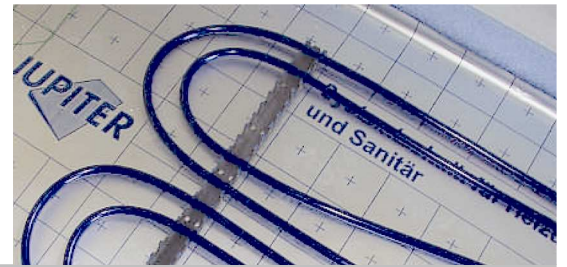


JUPITER



System STANDARD In screed underfloor heating

INTRODUCTION

System STANDARD is a traditional 'pipe embedded in screed' underfloor heating system. Using low temperature warm water, System STANDARD effectively heats buildings by radiating heat through a heated screed. JUPITER System STANDARD can be installed within 50mm anhydrite screed or 65mm sand cement screed.

Suitable for domestic and light commercial applications System STANDARD provides a cost effective heating solution for solid concrete and beam and block floor constructions.

Unlike other manufacturers JUPITER supply a thin Neopor® insulation layer as part of the system which, when installed on upper floors, meets Part L and contributes to Part E Building Regulations requirements.

CONTROL

JUPITER offer Individual room control with either hard wired or state of the art wireless thermostats and low power consumption mixing valves and pumps which allow our systems to be combined with traditional radiators.

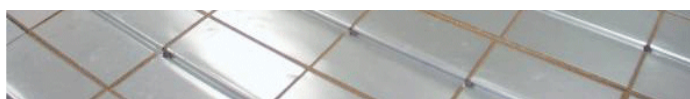
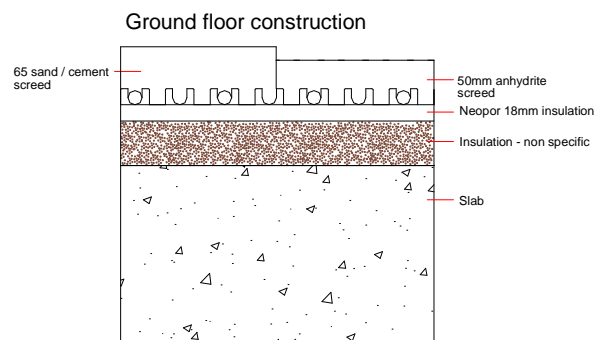
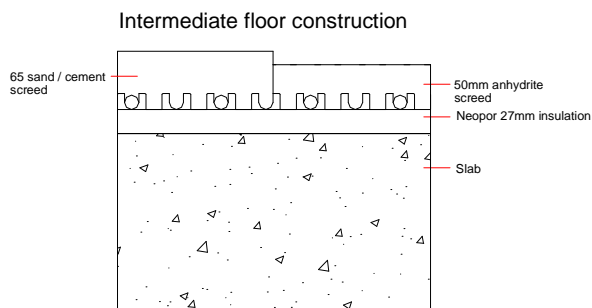
DESIGN SERVICE

We provide a design service, including heat output calculations and heating circuit layouts.



INSTALLATION

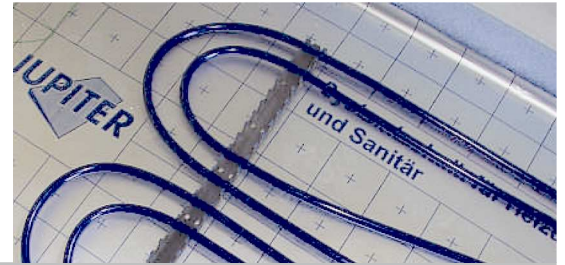
In most cases the JUPITER System STANDARD is installed either by our own engineers or by independent installers located around the UK. The system can be installed by self builders and we can issue a DVD which demonstrates all aspects of our various systems. We also supply comprehensive layout drawings as well as technical advice and after sales support.



JUPITER Heating System Ltd, Unit 1, The Barns, Pennypot Lane, Chobham, Surrey, GU24 8DJ
T +44 (0) 1276 859 066 F +44 (0) 1276 856 894
www.jupiterunderfloorheating.com

"...no need to screed"™

JUPITER

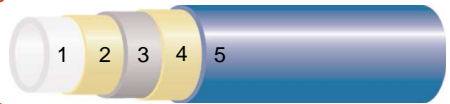


System STANDARD In screed underfloor heating

JUPITER PIPE

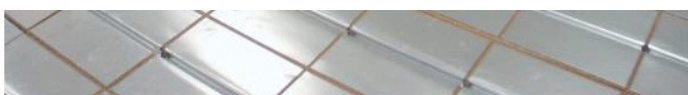
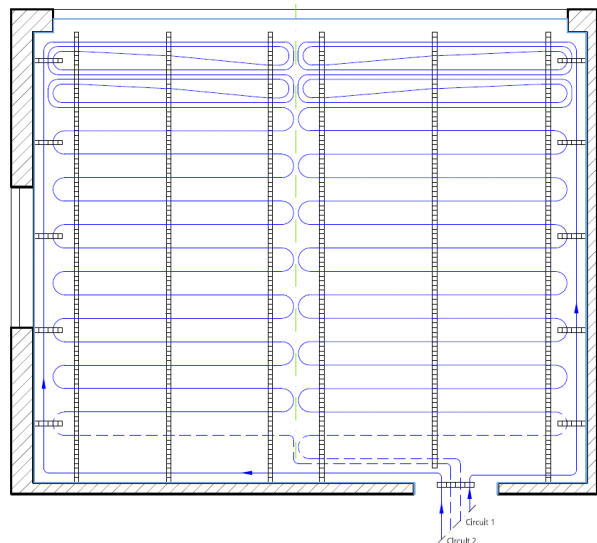
At the core of the JUPITER heating system is our multi layer aluminium / polyethylene PE-RT pipe. The advantages of both metal and polyethylene are combined to give an air tight, long lasting and corrosion free pipe. JUPITER multi layer pipes are manufactured in Germany and are tested and approved to the highest standards.

- 1 Polyethylene pipe
- 2 Adhesive layer
- 3 Aluminium pipe
- 4 Adhesive layer
- 5 Polyethylene pipe



The JUPITER IDEAL UFH system and associated products has been tested to, and met the following standards: BS EN 1264, DIN 1055, DIN 4108, DIN 18202, EnEV. All JUPITER multi layer pipe is guaranteed for 10 years and has been simulation tested to have a life span of over 50 years.

We provide a comprehensive range of accessories for all heating and domestic water supply installations. We also hire our range of tools which are required for a correct installation of our system. Please see additional Tool Hire leaflet. JUPITER supplies all additional equipment such as manifolds, thermostats and blending valves to connect the UFH system to any type of boiler.



JUPITER Heating System Ltd, Unit 1, The Barns, Pennypot Lane, Chobham, Surrey, GU24 8DJ
T +44 (0) 1276 859 066 F +44 (0) 1276 856 894
www.jupiterunderfloorheating.com

"...no need to screed"™