



Stainless steel manifold

Unpacking and initial assembly.

In order to protect fragile components, certain pieces are packed separately and need to be attached before proceeding. Isolating valves and the thermostatic dials are packed separately.

It is recommended that all connections are tightened up before filling the manifold with water as they can become loose from transportation.

The surface mounted manifold cabinet should be fixed to the wall by simply drilling holes through the metal cabinet and fixing to the wall with screws.

Extra caution should be taken when installing flush mounted cabinets to ensure that the wall depth is compatible with the cabinet.

Pre-installation - Plumbing information

Primary connections to the JUPITER manifold are made using standard 1" fittings. The manifold includes 1" ball valves. Primary pipe work for surface mounted cabinets should preferably be run to enter the manifold cabinet from beneath and left. Flush mounted cabinets come with punch out panels on the side so primary connections can enter from the left side or from beneath.

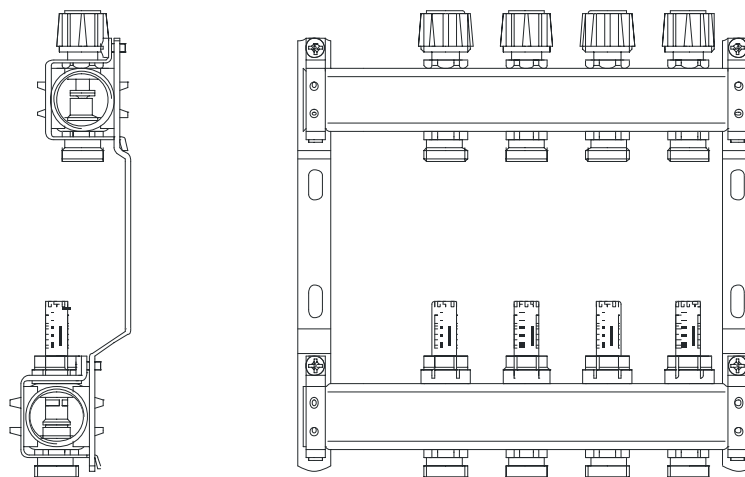
Systems with either large primary circuits or with three floors or more should be equipped with it's own automatic air vent device. The vents located on the manifold are intended for purging air from the JUPITER system and not the feed pipe work. The primary flow and returns should be back flushed and purged of air prior to the opening of the connected ball / isolating valves.

Pre-installation – Electrical information

For pre installation electrical information please see installation information specific to your choice of control solution.

Flow meters

Simply leave open unless otherwise advised. The ideal flow rate is between 1.5 -2.4 l/m and can be adjusted if necessary.



INSTALLATION GUIDE

JUPITER



Stainless steel manifold



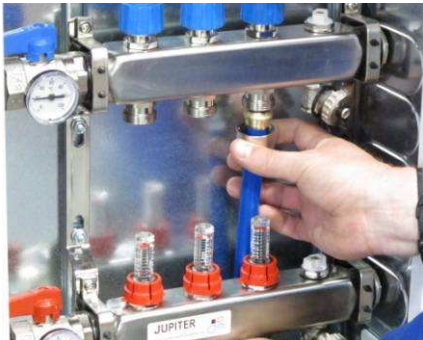
Fix isolating valves to the manifold – insert separately packed thermostatic dial into slot on flow & return valves



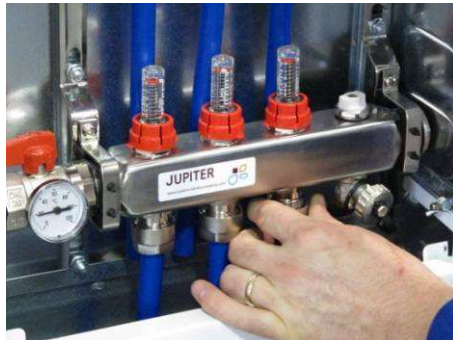
Always calibrate the end of pipe with bevelling tool before attaching to manifold



Place nut and brass split ring over pipe before inserting Eurokone fitting



Push Eurokone insert into manifold and tighten up with 27mm spanner



Continue procedure with all circuits



Ensure all flow meters are open by removing red cap and turning anti-clockwise



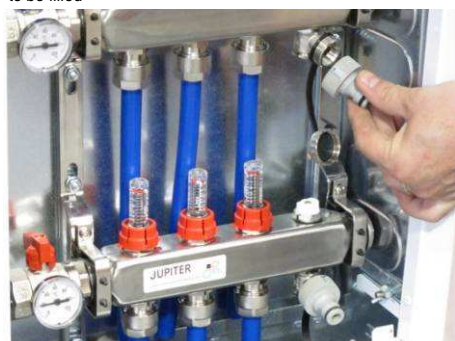
Close all blue caps on the return manifold except for circuit to be filled



Close isolating valves



Open fill and drain valve using key on the back of cap



Attach Hozelock fittings



Fill via the lower valve and connect return hose to upper valve and allow to drain into an outside bucket.



Once no more air bubbles emerge, simultaneously close the completed circuit and open the next one.

INSTALLATION GUIDE

JUPITER



Stainless steel manifold



Once purged with air close fill & drain valves using cap. Close upper return valve first then lower fill valve. Only then turn off water supply and remove hoses.



Re-open all blue caps on upper manifold prior to pressure testing.



Connect pressure test equipment to upper return valve. Before connecting pressure test to the in-situ hose lock, pump some water out through the connecting pipe to avoid pumping unnecessary air into system. Before opening return valve with cap bring pressure up to approx. 5 bar.



Once connected pump up to 8 bar. Once satisfied that there are no leaks, leave on test for a minimum of 1 hour.



Once completed decrease pressure to 2 bar and then close return valve using cap. Release remaining pressure before removing test equipment from manifold. Remove testing equipment and close cap.



Flush fitting



Surface mounted

Manifold and manifold cabinet sizes

Number of circuits		2	3	4	5	6	7	8	9	10	11	12	
Just manifold (inc. ball valves) width mm		265	315	365	415	465	515	565	615	715	765	815	
Manifold & mixing valve (width mm)		420	470	520	570	620	670	720	770	820	870	920	
Cabinet sizes													
Without mixing valve	Surface mounted (W)	452	452	452	552	552	652	652	802	802	952	952	D:125mm
	Height (H)	565-635	565-635	565-635	565-635	565-635	565-635	565-635	565-635	565-635	565-635	565-635	
	Flush mounted	385	435	489	489	574	724	724	724	874	874	874	D:115mm (min.)
	Height	700-800	700-800	700-800	700-800	700-800	700-800	700-800	700-800	700-800	700-800	700-800	
With mixing valve	Surface mounted (W)	452	552	652	652	802	802	802	952	952	952	952	D:125mm
	Height (H)	600	600	600	600	600	600	600	600	600	600	600	
	Flush mounted	574	574	724	724	874	874	874	1024	1024	1024	1024	D:130mm (min.)
	Height	715-800	715-800	715-800	715-800	715-800	715-800	715-800	715-800	715-800	715-800	715-800	

Please note that wiring centres and control units for some thermostatic control systems may not fit within the manifold cabinet. For further information on the fitting of electrical equipment within manifold cabinets please call us.